

Welcome to the Juneteenth Cal Hort Meeting!

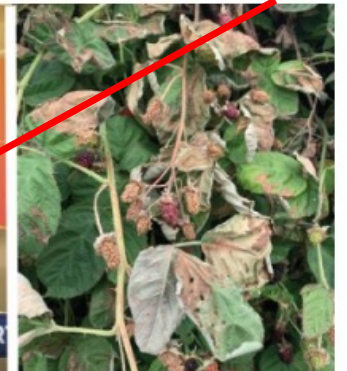


The video recording of this meeting is available on our YouTube channel:
www.youtube.com/@CaliforniaHorticulturalSociety



At 7:00 PM we will have our featured presentation by Paul Bonine speaking on "The Heat Dome in the Pacific Northwest".

Unfortunately Paul Bonine had to cancel due to unforeseen circumstances. June meeting was all plant forum



How Native Plant Communities Adapt to Heat

...in our gardens and the ... discuss the heat dome ... affected the plant world. ... over time of these events ... moment and how to adapt

...f the wholesale and retail specialty plant nursery Xera Plants, in Portland, Oregon. A lifelong plantsman, Bonine has worked in the nursery industry for nearly twenty years and has consulted for NPR, the *Sunset Western Garden Book*, and *The Oregonian*. He is the author of *Black Plants: 75 Striking Choices for the Garden* (Timber Press, 2009) and co-authored *Gardening in the Pacific Northwest: The Complete Homeowner's Guide* (Timber Press, 2017). You can find links to some of his articles on the Pacific Horticulture website: pacifichorticulture.org/contributors/paul-bonine. 🌿

Last Saturday's
Coffee in the Garden
at
Kristin Yanker-Hansen's garden.



Kristin Yanker-Hansen's garden.



Announcements – Next Saturday: Coffee in the Garden...sort of Saturday June 24th



Food trucks for coffee, treats and perhaps lunch afterwards





Plant Forum

Thank you

Sal Levinson

Judy Wong

Daisy Mah

Ellen Frank

Heather Gorawski

Saxon Holt

Robbie Ridenour

Beryl Golden

Mark Delepine

And everyone who added to
the conversation tonight!

Thank you for sharing your gardens, your special plants, your gardening experiences, your questions and your advice at this month's Plant Forum.

We love seeing what is happening in everyone's gardens and learning from each other!

California Tortoiseshell caterpillars
eat ceanothus.



Sal Levinson
gardens in Berkeley

Judy's front yard Lookin' Good!

Clarkia



Orlaya grandiflora



Calandrinia – the purple-pink flowers all throughout. And in the right corner is a few Nigella (Love in a mist)



Judy Wong gardens
in Menlo Park

Pelargonium Arden
species hybrid –tuberous
plant that goes Summer
dormant in hot
Summer areas



Pelargonium Flor de fuego- Hybridized by
Jay Kapac, southern California.

Hibiscus trionum –
Flower of the hour
– Annual sprawling
vine from
Southern Europe

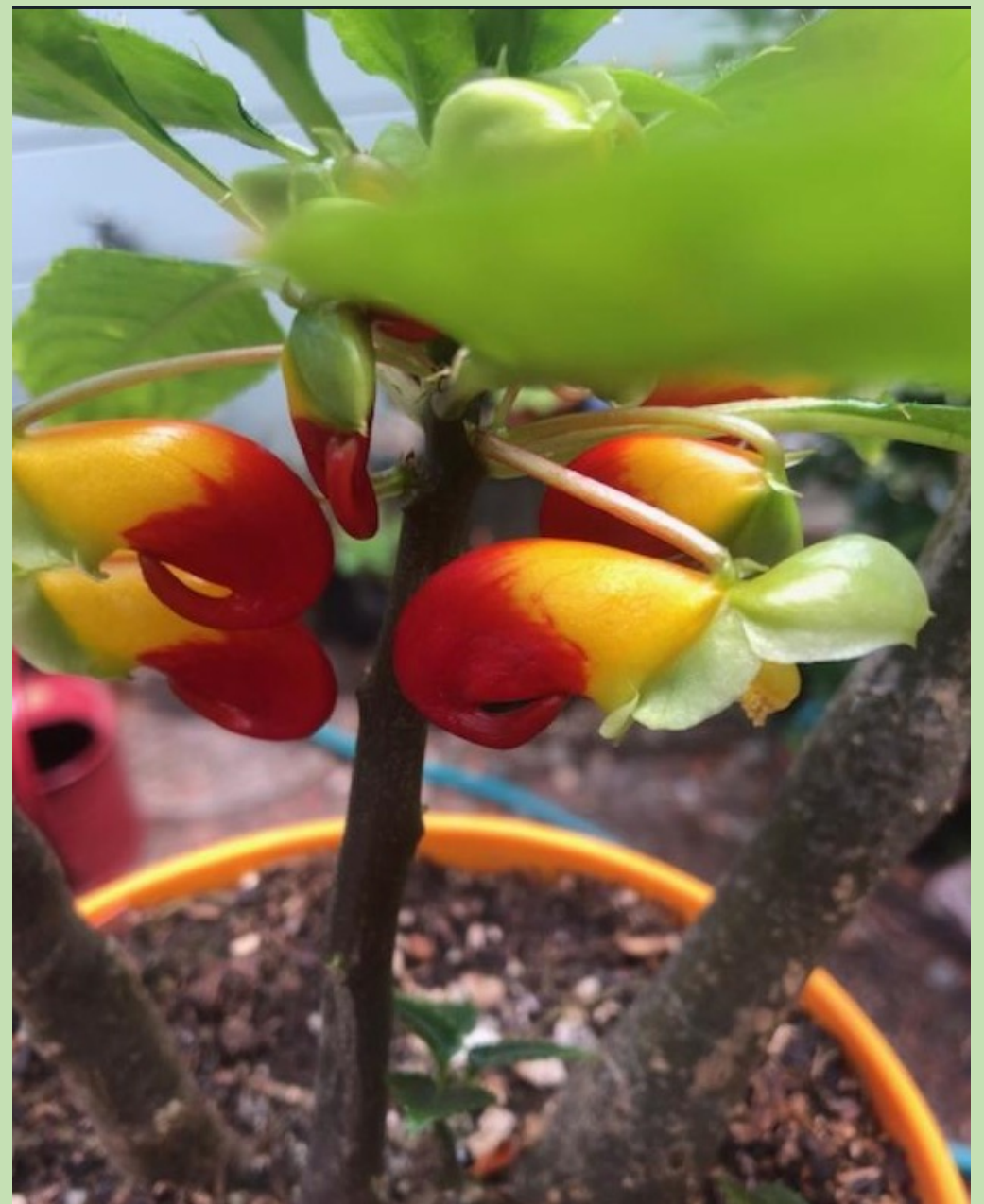


Judy Wong



What happened? My Mekanopsis – flower stalk didn't extend – Why not?

Impatiens niamniamensis
'African Queen'
from tropical Africa
evergreen,
growing 2-3
feet tall.



Judy Wong



Spigelia marilandica, an herbaceous perennial from the East Coast is in the Loganiaceae and grows in woodlands and prefers rich moist shade or partial shade. It grows 1 to 2 feet tall and wide.

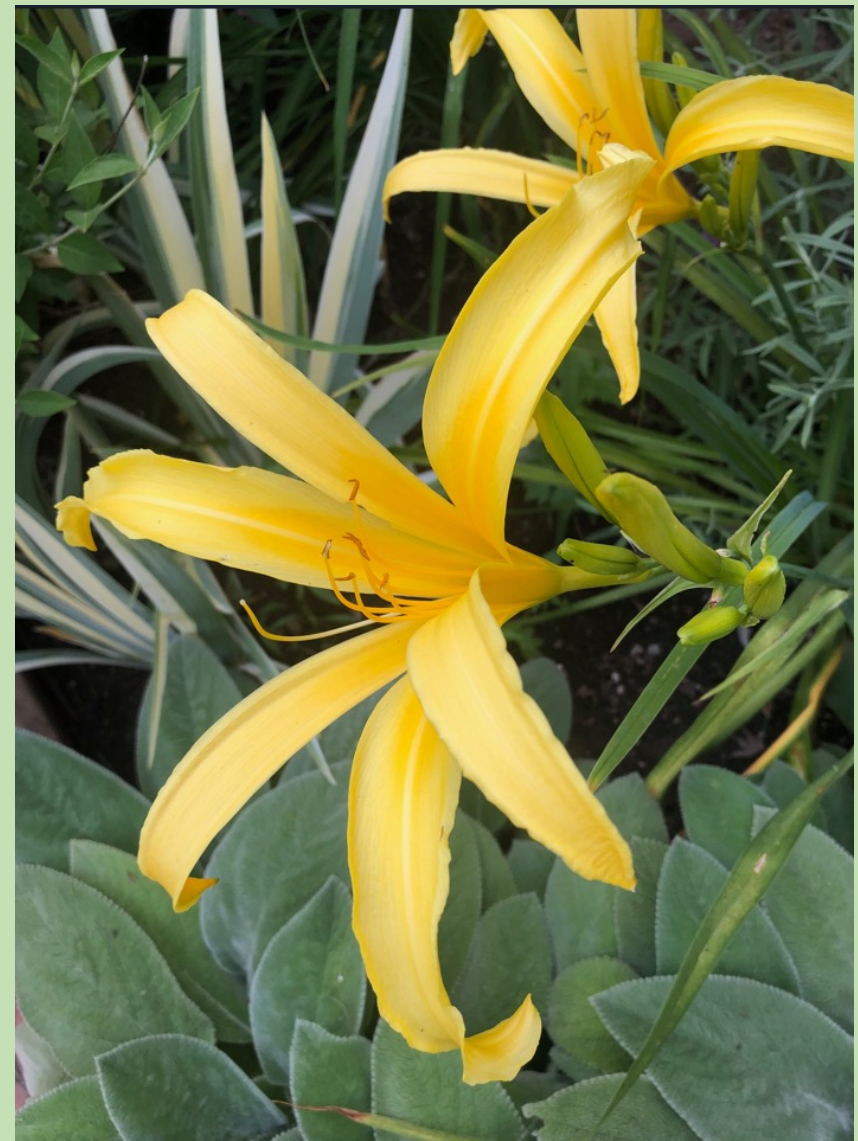


A shrubby ***Scabiosa farinosa*** from Nancy Schramm, Carman's nursery, attracts bees, needs dead heading and grows 18" to 24" tall and can get a bit wider. Can tolerate low water.

**Daisy Mah
Gardens in
Sacramento**



a new *Clarkia pulchella*,
pulchella, meaning pretty is
from the Pacific NW east of
Cascade Range



5-6 " slender spider like blooms on
Hemerocallis 'Cat's Cradle' aka Spider
daylily, it is evergreen and rebloomer.
Literature says it resents transplanting.

Some lilies that did well in Daisy's garden this year with the long, somewhat mild Spring.



Daisy says "I the only lily I can identify is the CA native *Lilium pardalinum*. (above center). I prefer growing down facing first and out facing secondly."



Early Summer Native bloomers



Brodiaea
I have 3 different populations and never had significant bloom until this year's rains.



Monardella villosa "Russian River", Coyote Mint hides behind a rock with one of the *Diplacus* hybrid monkeyflowers. The Coyote mint grows about 1.5' tall and about as wide. The semi-deciduous perennial should be partially cut back in Winter. Good pollinator plant and can take part shade and very low water.



Madia elegans – Last year a cloud of these cheerful yellow composite flowers with a maroon dots on the base of the petals creating a ring. This year it reseeded, but only these two characters showed up.

Ellen Frank gardens in Martinez



Lotus berthelotii 'African Queen'
Parrot's Beak

This trailing perennial (commonly grown as an annual) has silvery fine foliage and these bright attention-getting blooms. It evidently likes the cooler temps of spring / early summer and resents hot weather. It attracts hummingbirds and is deer resistant.

One More Brodiaea pic.





What is blooming in Montclair?

**Heather Gorawski gardens in
Montclair area in Oakland**



“These are just from some gardens I work in in Montclair, Oakland and just look quite lovely right about now!”



Salvia microphylla

**Heather Gorawski
gardens in Montclair**



Foothill Penstemon,
Penstemon heterophyllus 'GMR White'
(GMR stands for Glendora Mountain Road
found/selected by Rick Fisher)

**The Whites
make the
rest of the
garden
sparkle!**



Mimulus
'Phil's
White'



Philadelphus lewisii



Lilium leucanthemum

**Saxon Holt gardens
in Novato**



Digiplexis 'Berry Canary'
which is a cross between
Isoplexis canariensis x *Digitalis*
purpurea.

“The Fuchsias have
started blooming”



Rose 'Eden'

Saxon Holt



Monet
Hollyhock
from
Giverney
2022 on the
left – *There
was some
discussion if
this was
actually a
Hollyhock
which
Giverney
indicated. It
was discusse
if it may be a
Lavatera or a
Malva which
many are
called now.*



*Clarkia
amoena,
Farewell
to Spring*

Saxon Holt



Clematis 'Niobe'

*Deschampsia
cespitosa*



Saxon Holt

Robbie's Roses in Southern Oregon



“A path through my garden this spring. A work in progress.”

“The roses in my garden exploded this spring with the long rainy season.”

“These are some of the old garden roses that are blooming in my garden now.”

Christopher Marlowe - David Austin Shrub 2004. “Love the center pucker and blooms all season.”



Christopher Marlow
David Austin Rose

**Robbie Ridenour
gardens in Oakland
Oregon**

Reve d'Or Tea-Noisette. Noisettes are the only rose class original to the USA around 1811. The noisettes were crossed with the tea roses (not hybrid tea) creating the tea-noisettes, a climbing rose generally 12' and are repeat bloomers. This Reve d'Or is finally established after 5yrs & is now in full bloom.



Sally Holmes a Hyb Musk Shrub is a tall, bushy almost thorn-less climber to about 12'. Can be pruned as a shrub but in my opinion excels as a large specimen. Beautiful soft orange buds opening to large single blooms. Repeats prolifically all season.

Robbie Ridenour

Little White Pet Polyantha Climber (pictured below) was discovered 1895. Can grow to 15' & bushy. Also showing a closer look at the little white blooms. Polyanthas are very hardy, prolific rebloomers and mostly disease free. The climber is a sport of the bush form. Polyanthas are a cross from wild roses & are the ancestors of the floribunda rose.



Little White Pet "close up".

Robbie Ridenour

What's happening in Beryl's Garden?



Both are *Euphorbia autropurpurea*, but the one on the left has a new leaf coming out striped like the color of the bracts. Interesting.



**Beryl Golden
gardens in Richmond**

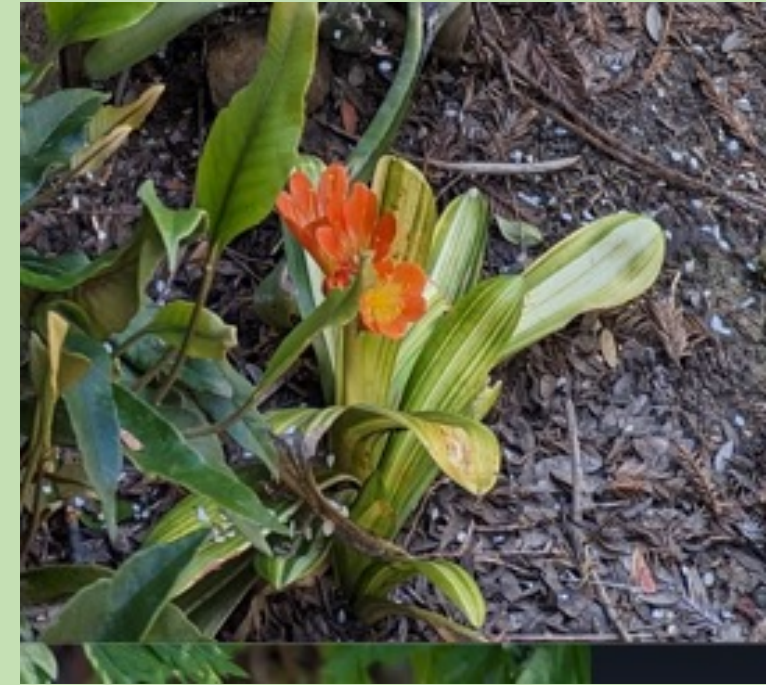
What's happening in Beryl's Garden?



A heritage rose (ID?) from a cutting;
strong fragrance



“**Acer aconitifolium Maiku jku**, Dancing Peacock, is purported to have “show-stopping” multi-colored fall color. Full Moon maple, as Beryl says, is a more simple entire leaf. That gets nice golden fall color.”



Variegated Clivia blooming
for the first time.

Beryl Golden

Mark's favorite fern – *Adiantum aleuticum* A.K.A Five Finger Fern



**Mark Delepine
gardens in Berkeley**



Edelweiss leontopodium

(of the Sound of Music fame).
Short lived at low elevations and
growing in a tufa pot at Lake Merritt.



Sweet Pea 'Nimbus'

Lathyrus

odoratus this has
been on the seed
exchange in the
past donated by
Bart O'Brien. This is
a popular 'streaked'
or "flaked" variety
with long strong
stems for cutting.
Bred by Urwins.
Growing in Lake
Merritt Gardens.



Mark Delepine

What a handsome Lupine?



These were taken at the Gardens at Lake Merritt. These photos were ID'd by Bart O'Brien as *Lupinus microcarpus* var. *densiflorus* f. *Aureus* 'Ed Gedling' which was developed from a natural population near UC Davis years ago. This is an annual growing 1-3 feet high with long yellow spikes of pea like flowers.



Next Month's Program

Monday, July 17th

At 6:30 for the plant forum followed at 7pm with the featured presentation:

Kiamara Ludwig

The Flora of the Patagonia Steppe

Kiamara is a skilled grower and gardener with experience in many specialized plant groups: geophytes, ferns, alpines and alpine-like plants, succulents, and bryophytes. Ms. Ludwig was one of a small cadre of dedicated grower-gardeners, have recently rejuvenated the Western Chapter of North American Rock Garden Society (NARGS). In 2020, she completed her four-year term as an Interpretive Student Aide at the Regional Parks Botanic Garden in the Berkeley Hills, where she continues with her main interest in plant propagation. While a long-time member of NARGS, she has until recently focused primarily on propagating plants for the rock garden group at the San Francisco Botanical Garden and for private clients allowing her to install rock gardens.